



## CHAPTER TWO

### Fire Lanes and Fire Access

#### Contents:

- Fire Access Plan Submittal Requirements
- Fire Lane Signs and Installation
- Fire Lane Identification (Red Painted Curbs)
- Alternative Surface Fire Apparatus Roads
- Blue Reflective Markers

#### Purpose:

Proper fire lanes directly affect how the Fire Department is able to maneuver through a property. These fire lane standards help to ensure unimpeded access for the fire apparatus.



---

## ACCESS REQUIREMENTS FOR NEW CONSTRUCTION SITES

See Chapter 1-8: Access Requirements for New Construction Sites for details and specifications. Consult with your Fire Inspector to answer any questions you may have regarding access requirements during any phase of construction.

---

## FIRE LANE SIGNS

When required, approved signs, curb markings or other approved notices shall be provided for Fire Apparatus Access Roads. Their location should be shown on the approved plans. If fire lane signs are not shown, please consult with your Fire Inspector for assistance in determining sign locations.

All signs are to be installed perpendicular to the road and facing the direction of travel and may be required to be double sided.

---

## FIRE ACCESS PLAN SUBMITTAL REQUIREMENTS

Digital copies of the SITE PLAN or FINAL PLAT showing the location of the following items shall be submitted for review and approval at time of initial building plan submittals.

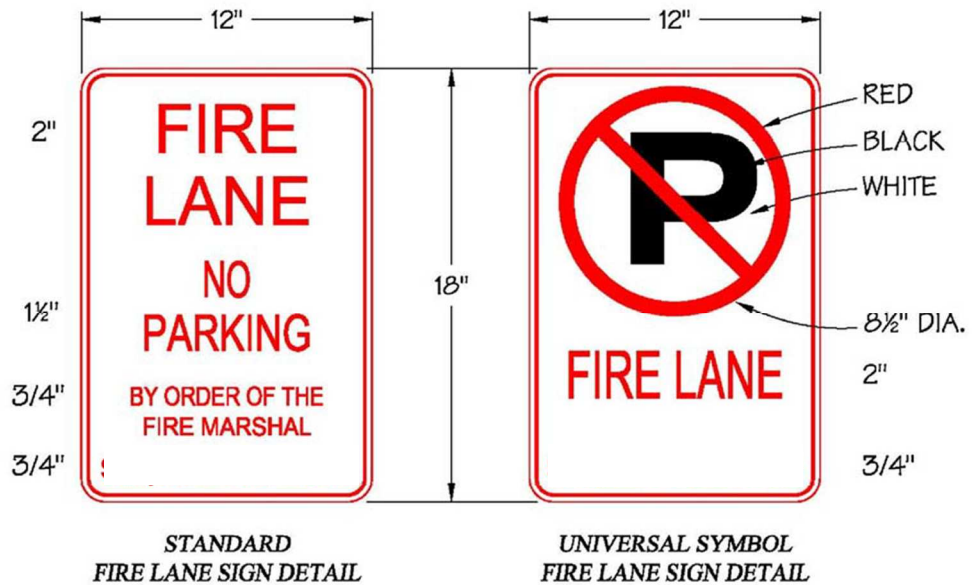
- Project name and location
- Property lines and construction area
- Cross streets and intersections
- Emergency vehicle access sign location
- A minimum of one (1) point of access
- Access road with a minimum width of 20 feet and a minimum vertical clearance of 13 feet 6 inches
- Turning radius with a minimum outside radius of 42 feet 8 inches and a maximum inside radius of 20 feet 3 inches
- A minimum of one (1) approved fire hydrant capable of supplying the required fire flow within 400 feet travel distance of all combustibles

The following statements must be noted on the plans:

- Access roads will be designed and maintained by the contractor/builder
- Fire apparatus access roads shall be designed and maintained to support the imposed loads of fire apparatus, at least 82,000 pounds and shall be surfaced so as to provide all-weather driving capabilities.
- Access surface will be ABC compacted to 95% or asphalt for grades up to 6%. For grades from 6% to 12%, the surface shall be comprised of asphalt type materials. For grades from 12% to 15%, surfaces shall be comprised of concrete with a traction surface. Grades shall not exceed 15% without approval from the fire code official.



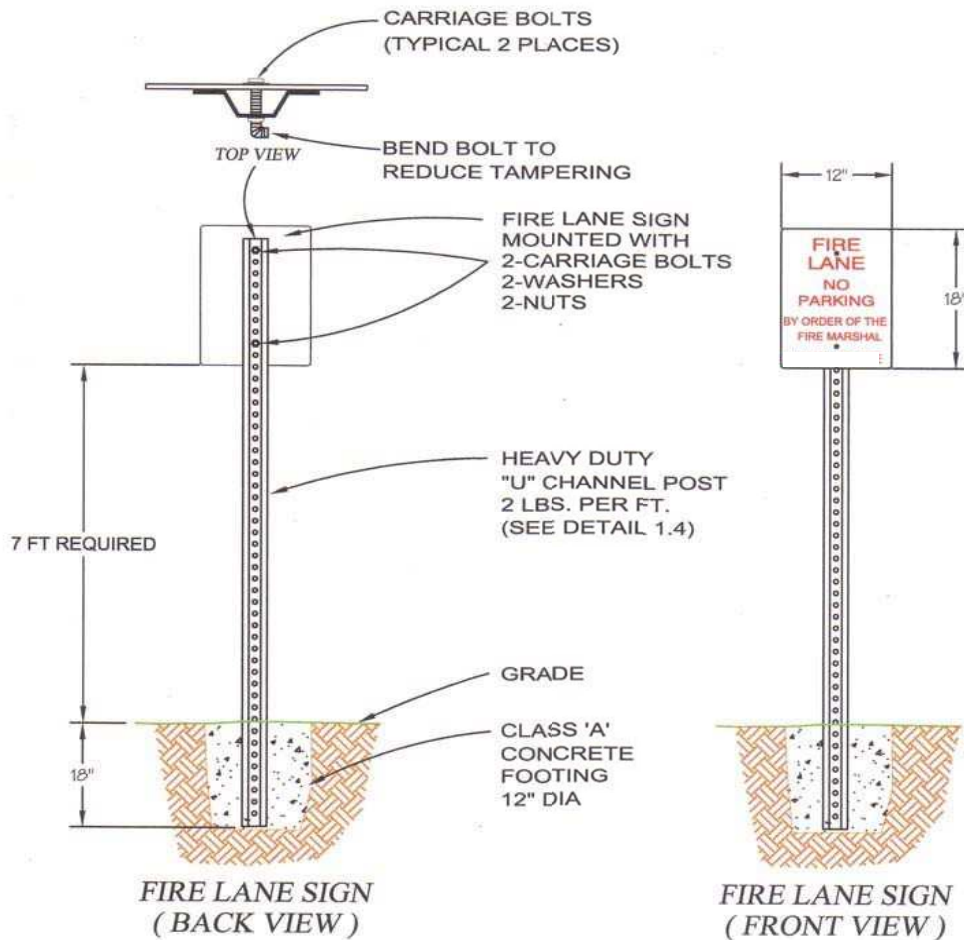
## FIRE LANE SIGNS



The sign plate shall be a minimum of 12 X 18 inches. The sign face shall have a white reflective background with a red legend. A durable, weatherproof sign shall be used.



## FIRE LANE SIGN AND POST INSTALLATION SPECIFICATIONS

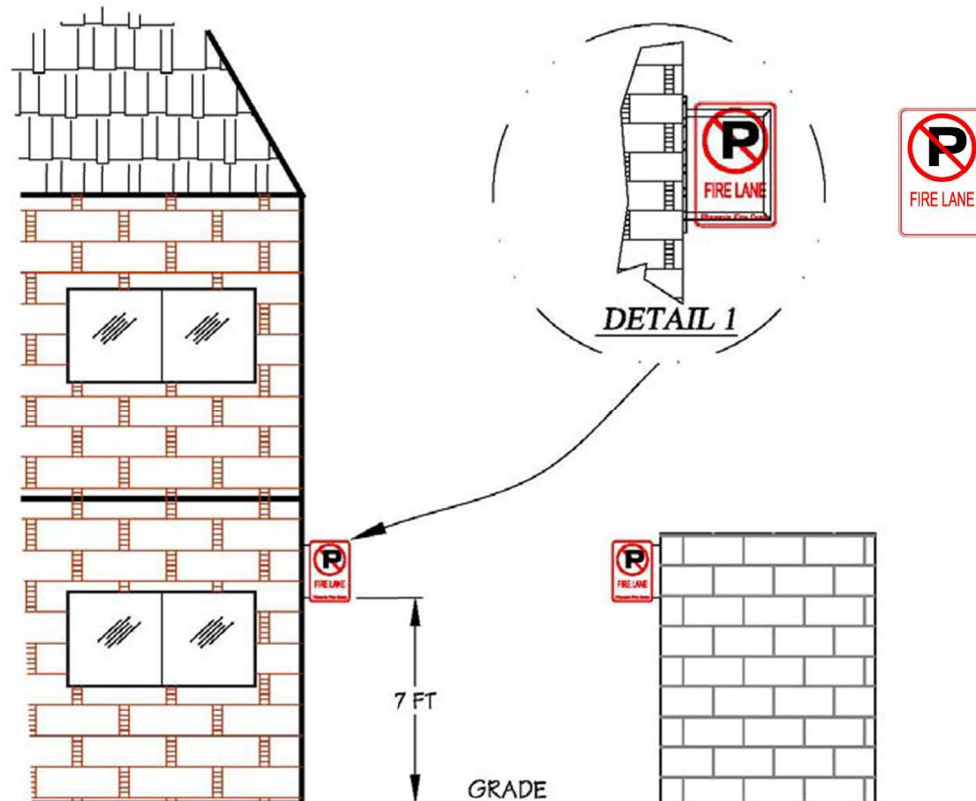


1. 10-foot long U-Channel galvanized or painted post.
2. The sign plate shall be a minimum of 12 X 18 inches. The sign face shall have a white reflective background with a red legend. A durable, weather-proof sign shall be used.
3. Signs must face the direction of **ONCOMING TRAFFIC**.
4. Post shall be installed 12 to 18 inches from back of curb or back of sidewalk.
5. Golder Ranch Fire District recommends you blue stake before you dig.





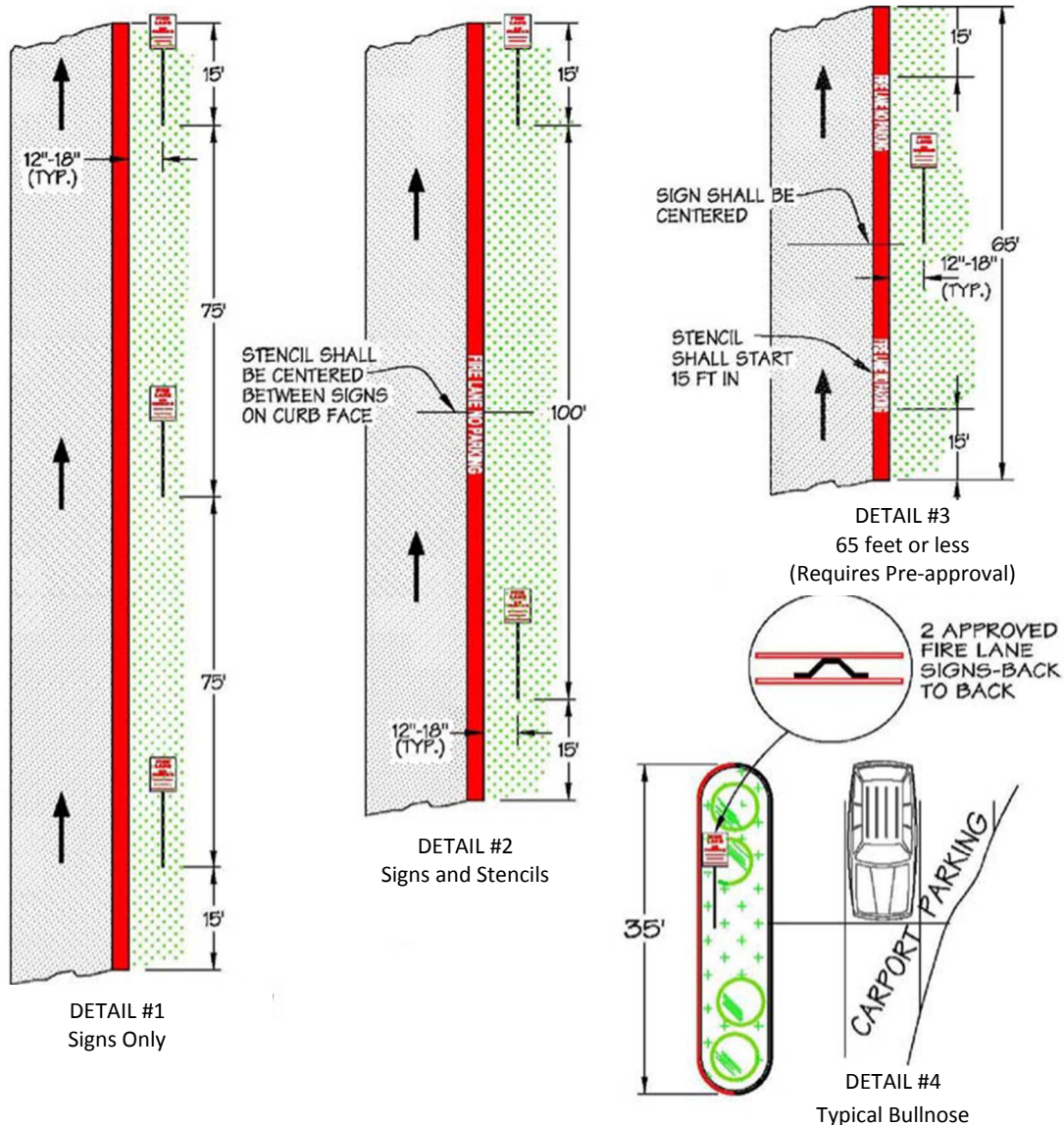
## WALL MOUNT BRACKET FIRE LANE SIGN "FLAG-MOUNT STYLE"



1. The sign plate shall be a minimum of 12x18 inches, durable, weather-proof, and permanently installed.
2. This application only available when sign cannot be installed on an approved post.



## FIRE LANE IDENTIFICATION, STENCILING AND SIGN INSTALLATION



1. Approved fire lane signs shall be installed 12 to 18 inches from back of curb or back of sidewalk.
2. Sign must face the direction of **ONCOMING TRAFFIC**.
3. Stencils shall be in white lettering (4-inch height, ½ inch stroke) on "Industrial grade" safety red painted curb.
4. Stencil shall read "Fire Lane No Parking."



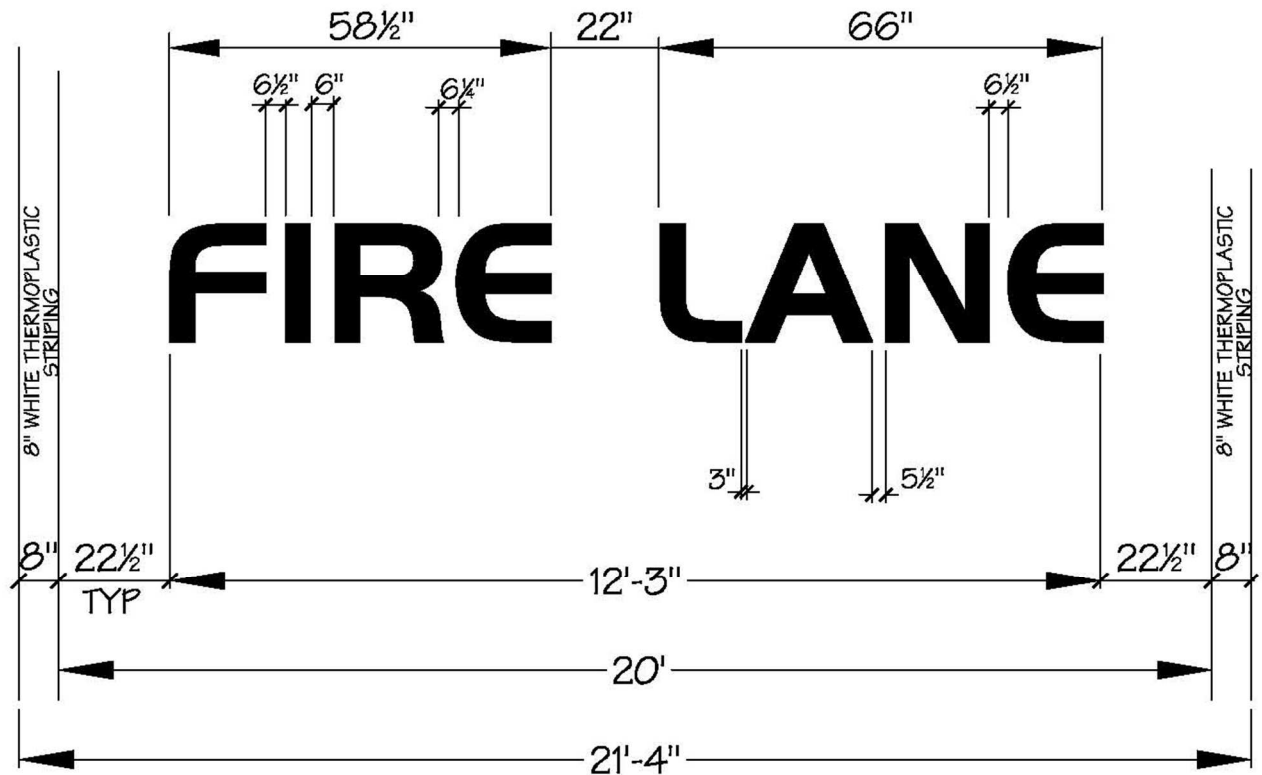
The diagram illustrates the required markings for a fire lane. It shows a street with a fire lane marked by a 20-foot wide area. The fire lane is defined by a 19.5-foot radius and a minimum 45-foot center turning radius. The fire lane is marked with 8-inch white thermoplastic striping or white glass bead paint, applied in two coats. The fire lane is marked with a 20-foot width and a minimum 45-foot center turning radius. The fire lane is marked with a 20-foot width and a minimum 45-foot center turning radius. The fire lane is marked with a 20-foot width and a minimum 45-foot center turning radius.

**Diagram Labels:**

- 19.5 FT RADIUS
- MIN. 45 FT CENTER TURNING RADIUS
- 45 FT RADIUS
- FIRE LANE
- 8" WHITE THERMOPLASTIC STRIPING OR WHITE GLASS BEAD PAINT - APPLY 2 COATS
- ② FIRE LANE LEGEND PLACED EVERY 100 FT
- MIN. 45 FT CENTER TURNING RADIUS
- 100 FT
- 20 FT
- MINIMUM WIDTH
- STREET
- 8" WHITE THERMOPLASTIC STRIPING
- INSTALL PREFORMED PAYEMENT MARKINGS TYPE 1 (AZ. DOT. SECT. 705-705-2.01)
- 2'
- FIRE LANE
- 12 FT - 3 IN
- 20 FT
- 21 FT - 4 IN
- ② FIRE LANE LEGEND
- LETTERS 24"HT. 4" STROKE USING HANDEL GOTHIC CAPITAL LETTERS



## ALTERNATIVE FIRE LANE MARKING SYSTEM



1. Letters 24-inch height with a three (3) inch stroke
2. Install performed pavement markings type I (AZ, DOT sect.705-705-0201).

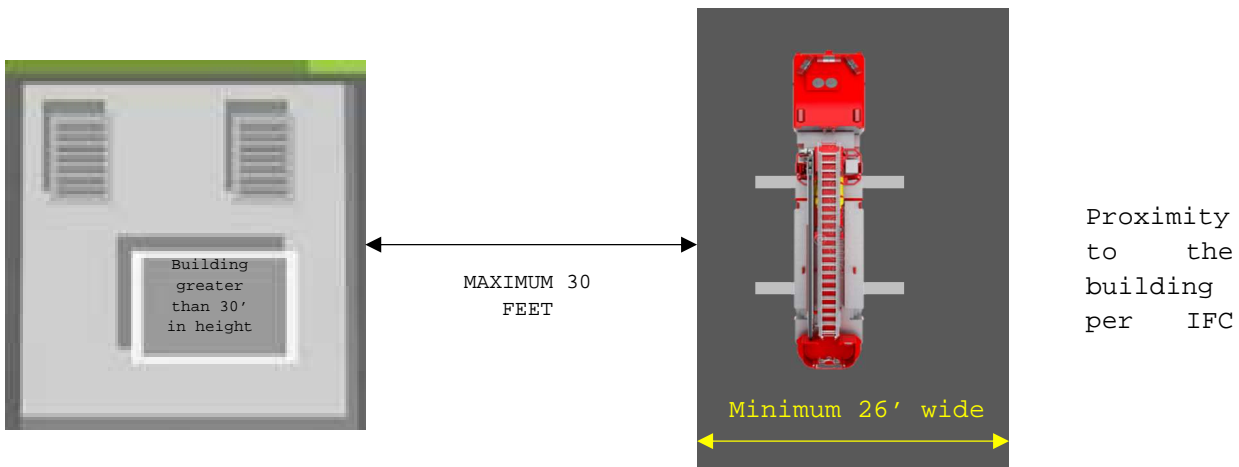
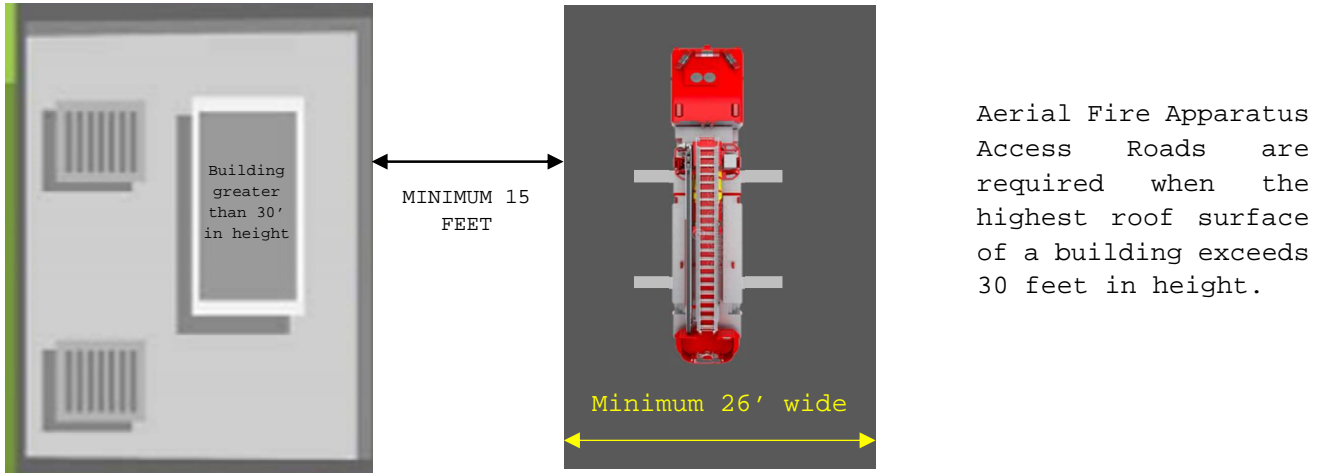


## ALTERNATIVE SURFACE FIRE LANE MARKING SOFT SURFACE





## STANDARD AERIAL FIRE APPARATUS ACCESS ROAD FOR BUILDINGS GREATER THAN 30' IN HEIGHT



The side of the building on which the aerial apparatus access road is positioned shall be approved by the Fire Code Official.



## REFLECTIVE BLUE MARKER INSTALLATION DETAIL

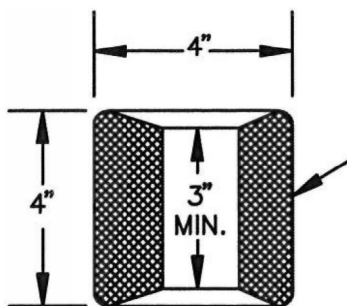


Reflective area is 3.25 square inches per reflective face.

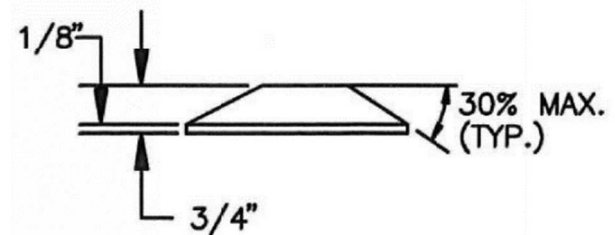


### MATERIALS

Acrylic plastic reflector  
filled with a tightly  
adherent potting  
compound.



PRISMATIC  
REFLECTOR  
(One side only for  
one-way traffic)



Elevation View

1. Blue/red reflectors are required to help identify the location of fire hydrants and fire department connections (FDC) in the dark.
2. Markers shall be STIMSONITE brand or equivalent as approved by the fire code official.
3. Blue reflectors shall be placed one (1) foot off the center line of the street or lane toward the hydrant or FDC.
4. One (1) blue marker is required to identify a fire hydrant.
5. One (1) red marker is required to identify an FDC.